

# **Cooling for Mobile Base Stations and Cell Towers**

Laird Thermal Systems Application Note  
October 2018

## Contents

<b>Background .....</b>	<b>3</b>
<b>Application Overview.....</b>	<b>3</b>
<b>Thermoelectric Overview .....</b>	<b>4</b>
<b>Thermoelectric Cooler Assembly Technology Evaluation .....</b>	<b>4</b>
<b>Solution .....</b>	<b>4</b>
<b>Thermal Control .....</b>	<b>6</b>
<b>Results .....</b>	<b>6</b>
<b>Benefit .....</b>	<b>7</b>
<b>Conclusion.....</b>	<b>7</b>
<b>About Laird Thermal Systems .....</b>	<b>7</b>
<b>Contact Laird Thermal Systems .....</b>	<b>7</b>

## Background

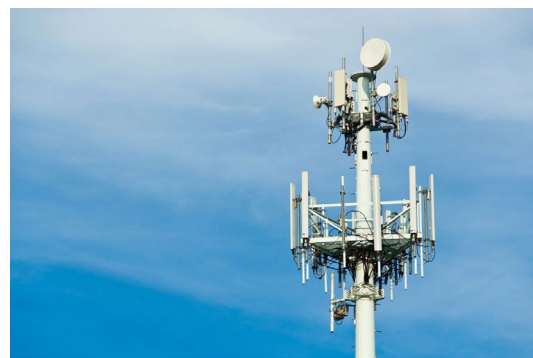
Unattended base stations require an intelligent cooling system because of the strain they are exposed to. The sensitive telecom equipment is operating 24/7 with continuous load that generates heat. Cooling systems must protect critical telecommunication cabinets, energy storage systems and back-up battery systems.

## Application Overview

Bulky compressor-based air conditioners have traditionally been used for removing heat generated by communications equipment installed in base station and cell tower enclosures. These air conditioners are constantly running throughout the year, consuming large amounts of energy. Many electronic cabinets found in base stations and cell towers are cooled needlessly with these expensive compressor-based air conditioners. Standard air-to-air temperature control systems with vertical mounts are often too large to fit inside an enclosure, so instead they are mounted on an exterior wall to provide temperature control to the entire space inside. Thermoelectric cooler assemblies offer a smaller, more efficient option to precisely cool or heat vital electronics in telecom enclosures, energy storage and battery backup cabinets.

Remote monitoring and control of the cooling system is vital to ensure the working condition of the machines distributed in different base stations. When the power to a cellular antenna tower goes out, emergency batteries provide power for a limited time. Battery back-up systems are susceptible to degradation when exposed to elevated temperatures or when exposed to very cold temperatures. Cooling below ambient is necessary to extend the life of back-up batteries, and temperature stabilization is required to maintain peak performance. Many base stations and cell phone towers are found in isolated locations that can be difficult to quickly access and repair. As a result, long life operation is required in wireless base station and cell tower applications to maximize uptime and maintain low cost of ownership. Thermoelectric cooler assemblies can operate for much longer with less power consumption, ensuring more reliable cellular coverage during power outages.

Another requirement for a cooling system in base stations and cell towers is humidity control. Dry air will make static to burn the communication equipment, thus humidity control is as important as temperature control.



*Wireless base station and cell tower applications require long life operation since they are often difficult to access and repair.*

## Thermoelectric Overview

Thermoelectric coolers are solid-state heat pumps that operate using the Peltier effect. When an electric current is driven through a circuit containing two dissimilar materials, heat is absorbed at one junction (the cold side) and released at the other junction (the hot side). The design of most Peltier devices requires the use of both an n-type semiconductor and a p-type semiconductor. Since heat naturally flows down a temperature gradient from hot to cold, a thermoelectric cooler's ability to move heat from cold to hot in a solid-state fashion is unique. By reversing the polarity of the applied DC current, heating is also possible. This property is especially useful for applications requiring both cooling and heating for precise temperature control.

## Thermoelectric Cooler Assembly Technology Evaluation

Thermoelectric cooler assemblies, which utilize thermoelectric coolers, are compact, efficient units that can control the temperature in mobile base stations and cell towers. Thermoelectric coolers serve a cooling capacity spectrum from approximately 10 to 400 Watts, and can cool by removing heat from control sources through convection, conduction, or liquid means.

Thermoelectric coolers offer several advantages over other cooling technologies. For example, conventional fan trays do not cool to below ambient and require an air exchange with the outside environment. Thermoelectric cooler assemblies can cool to well below ambient and protect electronics inside enclosures from outside contaminants, and also limit moisture exposure from the outside environment. Thermoelectric cooler assemblies also provide precise temperature control and accuracies to within 0.01°C.

Thermoelectric cooler assemblies also simplify integration and lower installation costs. Thermoelectric cooler assemblies not only offer a more compact size and lower weight compared to conventional compressor-based systems, but they are also mountable in any orientation.

In addition, fans, fan trays and compressor-based systems generate noise and vibration. Thermoelectric cooler assemblies feature a solid-state construction that does not create noise or vibration, offering a longer life cycle compared to competing technologies. As a result, thermoelectric cooler assemblies have a significantly lower field maintenance requirement, which lowers the total cost of ownership. Thermoelectric cooler assemblies are also more environmentally friendly, as they do not use CFCs and are RoHS compliant.

## Solution

Laird Thermal Systems' Outdoor Cooler Series is an air-to-air thermoelectric cooler assembly that offers dependable, compact performance by cooling objects via convection. Designed for outdoor enclosures, harsh environment electronic cabinets, battery cabinets and more, the Outdoor Cooler Series combines superior heat pumping capability with minimal power consumption.

The AA-230 version has a heat pumping capacity of 230W at  $dT = 0^{\circ}\text{C}$ ,  $T_{\text{ambient}} = 35^{\circ}\text{C}$ . Heat is absorbed and dissipated through custom designed heat exchangers with high aspect ratio, air ducted shrouds and high-performance fans. The heat pumping action occurs from custom

designed thermoelectric coolers that achieve a high coefficient of performance (COP) to minimize power consumption.

Designed for horizontal mount orientation to accommodate shelf space in a cabinet or rack, the AA-230 is a smaller, more efficient option to cool or heat vital electronics. Instead of cooling the entire cabinet, a single smaller AA-230 cooler protects only the specific electronics that require cooling, which translates to significant energy cost savings. With a product that has a Coefficient of Performance (COP) of 1, the AA-230 can run longer with less power consumption than previously designed thermoelectric based cooling units

The AA-480 Series offers up to 480 Watts of cooling power. Also featuring a Coefficient of Performance (COP) rating of 1, the AA-480 Series thermoelectric cooler assembly is nearly 50% more efficient than standard air-to-air units offered today. This saves installation and maintenance costs for users as well as space inside cellular antenna towers or data centers.

Both products are environmentally friendly, as the solid-state operation eliminates the need for a compressor and CFC refrigerants.

In addition, the AA-230 and AA-480 Series have been designed to pass rigorous Telcordia test requirements, such as earthquake resistance, salt fog, wind-driven rain, high temperature exposure and dust contaminants. This is due to the selection of world class components such as brand fans with the highest degree of environmental protection and lifetime guaranteed waterproof connectors, heavy duty anodization on the high-density heat sinks, overheat protection, and double environmental seals for the thermoelectric coolers.



*AA-230 Outdoor Cooler*



*AA-480 Outdoor Cooler*

### Thermal Control

The temperature control specification for a battery back-up application is typically  $\pm 2^{\circ}\text{C}$  or greater. This allows hysteresis to be designed in, reducing cycling between cooling and heating or on/off when the enclosure is at its set point temperature. This range is suitable for thermostatic control, but a tighter tolerance requires a proportional type of control.

A thermoelectric-based controller can drive the temperature of an enclosure to within  $0.5^{\circ}\text{C}$  of the set point temperature. This is accomplished with the integrated bi-directional proportional (PID) control, adjusting the net power to the thermoelectric cooler assembly allowing fine tuning and rapid response to component or environmentally-induced heat load fluctuations. A bi-directional thermostatic controller can operate in both heating and cooling modes to deliver precise temperature control. Controllers with a bi-directional output are used with thermoelectric cooler assemblies for maintaining a constant temperature within a system surrounded by an ambient environment with large temperature fluctuations, i.e., back-up battery storage or climate control in an outdoor environment.

The operating range for a typically thermoelectric cooler is  $-40^{\circ}\text{C}$  to  $+65^{\circ}\text{C}$  for most systems, while compressor-based systems are typically designed for operation between  $20^{\circ}\text{C}$  and  $55^{\circ}\text{C}$ . This range is useful for most enclosure applications and operating environments. If heating is required, a separate heater and switching circuit must be used or if higher or lower temperatures are desired, a special compressor for that range (refrigerant, hardware) must be designed.

### Results

Laird Thermal Systems' Outdoor Cooler Series offers a lower cost of ownership by maintaining the appropriate temperature range using less energy than standard air-to-air systems due to its high coefficient of performance (COP). Because of its innovative design, the steady state construction requires less maintenance than standard compressor-based air conditioners.

The AA-230 and AA-480 units can operate for much longer with less power consumption than previously designed thermoelectric based cooling units, ensuring longer lasting battery backup during power outages.

## Benefit

Engineers must now consider thermal management early in the product design process. A standard thermoelectric cooler assembly from Laird Thermal Systems' allows the designer to start with a basic set of building blocks that mate fans and thermoelectric coolers to heat exchangers.

Laird Thermal Systems has conducted two decades worth of design and validation testing on various combinations of thermal components to optimize cooling power and efficiency at various heat loads.

Thermoelectric cooler assemblies can eliminate the need for a custom solution. This reduces product development time by initiated product at thermoelectric cooler assembly versus thermoelectric cooler level. It also reduces costs by utilizing components that are already established in the supply chain. With a long-term history of products in field, Laird Thermal Systems' offer is proven and available with reliable field data of robust products in operation.

## Conclusion

Laird Thermal Systems offers the industry's widest selection of thermoelectric cooler assemblies. Our standardized range of thermoelectric cooler assemblies provide different cooling capacity and deliver temperature stabilization that ensures sensitive battery backup systems operate at maximum efficiency. Offering precise temperature control and accuracy to within 0.01°C, the AA-230 and AA-480 series offer bi-directional control in one unit, making it ideal for battery backup applications.

## About Laird Thermal Systems

Laird Thermal Systems develops thermal management solutions for demanding applications across global medical, industrial, transportation and telecommunications markets. We manufacture one of the most diverse product portfolios in the industry ranging from active thermoelectric coolers and assemblies to temperature controllers and liquid cooling systems. Our engineers use advanced thermal modeling and management techniques to solve complex heat and temperature control problems. By offering a broad range of design, prototyping and in-house testing capabilities, we partner closely with our customers across the entire product development lifecycle to reduce risk and accelerate their time-to-market. Our global manufacturing and support resources help customers maximize productivity, uptime, performance and product quality. Laird Thermal Systems is the optimum choice for standard or custom thermal solutions. Learn more by visiting [www.lairdthermal.com](http://www.lairdthermal.com)

## Contact Laird Thermal Systems

Have a question or need more information about Laird Thermal Systems? Please contact us at [www.lairdthermal.com](http://www.lairdthermal.com)

Laird-Thermal-Systems-Cooling-for-Mobile-Stations-and-Cell-Towers-Application-Note-100118

© Copyright 2020 Laird Thermal Systems GmbH. All Rights Reserved. Laird, Laird Technologies, Laird Thermal Systems, the Laird Logo, and other word marks and logos are trademarks or registered trademarks of Laird Limited or an affiliate company thereof. Other product or service names may be the property of third parties. Nothing herein provides a license under any Laird or any third party intellectual property rights.